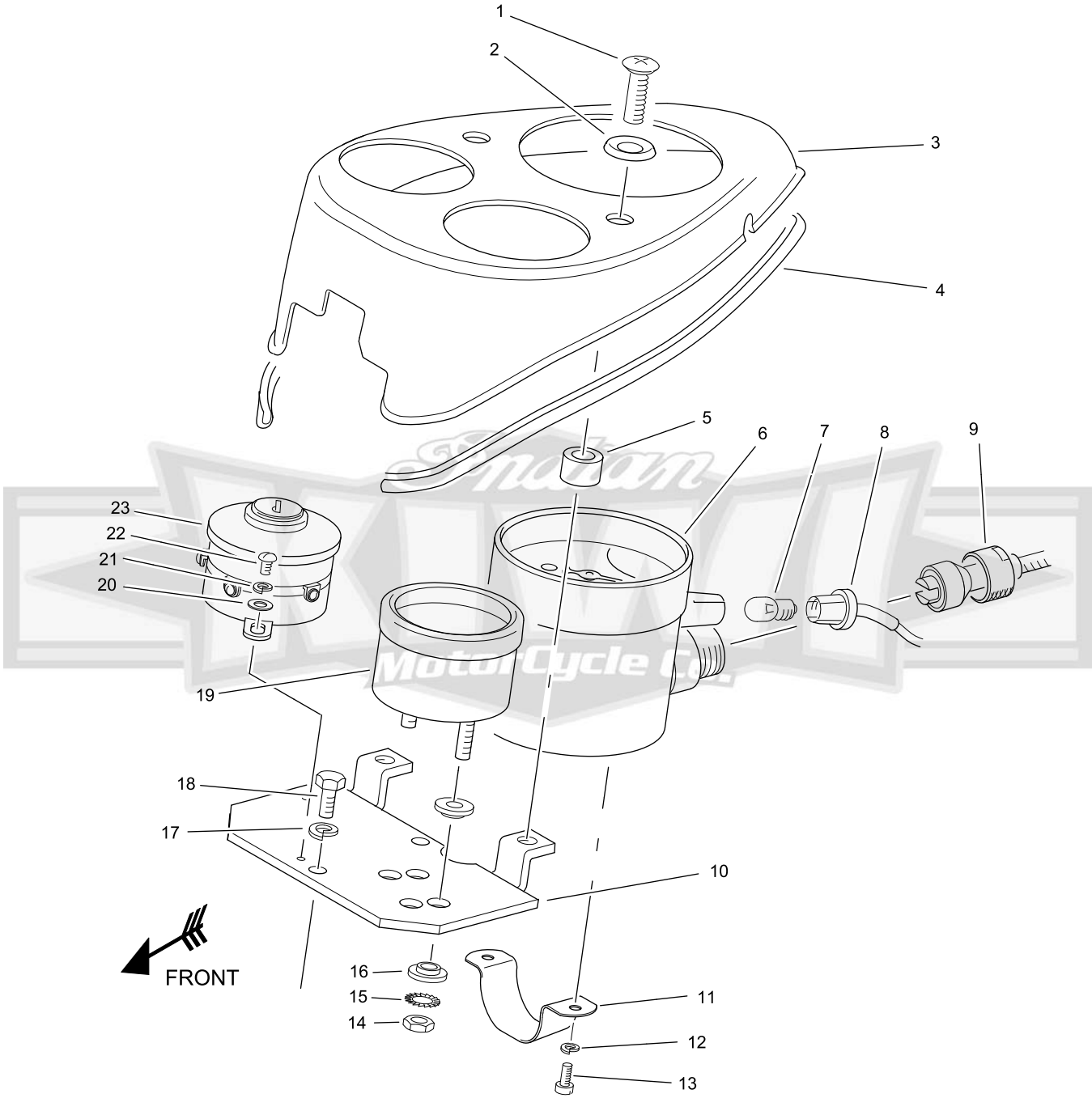


1938-47 INSTRUMENT PANEL



INSTRUMENT PANEL 1938-1947 PARTS

REF.	PART NO.	DESCRIPTION	QTY.	YEAR
1	45014K	Mounting Screw and Cup Washer Kit (stainless steel - includes 2 ea. ref. 1 & 2)	1	38-47
2	—	Washer - Cup (stainless steel)	2	38-47
3	629003	Instrument Panel - Polished <i>NOTE: It may be necessary to custom fit the panel around the harness area in order to achieve the ultimate fit.</i>	1	38-47
4	KI 11500	Rubber Strip - Instrument Panel <i>NOTE: The rubber strip was not originally fitted at the factory as the dash was held off the tanks by spacers, however, this leads to an ugly and irregular gap between the dash and tanks. See Instrument Panel Service for additional information.</i>	1	38-47
5	43071K	Spacer Kit - Instrument Panel (set of 2)	1	38-47
6	75206	Speedometer - (120 mph - gray face - includes ref. 7, 8, & 11-13)	1	38
*	75384	Speedometer - (130 mph - black face - includes ref. 7, 8, & 11-13)	1	39-40
*	75885	Speedometer - (110 mph - black face - includes ref. 7, 8, & 11-13)	1	41-45
*	804001	Speedometer - (110 mph - black face & red odometer bar - includes ref. 7, 8, & 11-13) <i>NOTE: 1938 through 1947 Corbin speedometers use a disc style odometer</i>	1	46-47
*	101561	Replacement Bezel (with glass installed)	1	38-47
*	101561G	Replacement Glass	1	38-47
7	100683	Bulb - Speedometer 6 Volt (original threaded style)	1	38-47
*	100683V	Bulb - Speedometer 12 Volt (original threaded style)	1	38-47
*	100683R	Bulb - Speedometer 6 Volt (replacement bayonet style)	1	38-47
*	100683RV	Bulb - Speedometer 12 Volt (replacement bayonet style)	1	38-47
8	102183	Socket - Bulb (speedometer lamp - Corbin)	1	38-47
*	102183R	Socket - Bulb (speedometer lamp - replacement - uses 100683R/RV bulb)	1	38-47
9	75262	Speedometer Cable (original 5/8" diameter, cloth covered)	1	38-39
*	75262R	Speedometer Cable (replacement 1/4" diameter)	1	38-39
*	75262S	Speedometer Cable (original 5/8" diameter, cloth covered)	1	40-42
*	277002	Speedometer Cable (replacement 1/4" diameter)	1	40-42
*	277002	Speedometer Cable <i>NOTE: Original cables through 1942 had a large 5/8 diameter cable and were cloth covered. Post 1942 Indians cables were reduced to 1/4" diameter (which also had a smooth operating inside flexi cable) and did not have any external covering. During Indians days of being in business, if your earlier model broke a cable, the factory replacement was the smaller 1/4" diameter cable. For this reason we also offer a replacement series cable just like Indian did back in the day.</i>	1	40-47
*	40403	Clip - Speedometer Cable (long - at fuel tank mounting bolt) <i>NOTE: This clip fits the original style large 5/8" diameter speedometer cables. An adapter spacer will necessary when using Indians later style smaller diameter cable.</i>	1	38-42
*	36B332	Clip - Speedometer Cable (to frame under seat)	1	38-47
10	41303	Plate - Mounting <i>NOTE: Over the years that this mounting plate was used there were several ammeter terminal locations. We supply this plate pre dimpled so you can select the appropriate hole pattern and final drill it to suit your year and style of ammeter.</i>	1	38-47
11	41278	Clip - Speedometer Mounting	1	38-47
12	—	Lock Washer - #10	2	38-47
13	—	Screw - Fillister Hd. #10-32 x 1/2"	2	38-47
14	—	Nut - Hex #10-32	2	38-47
15	—	Lock Washer - #10 External Tooth	2	38-47
16	41281K	Ammeter Insulating Washer Kit (set of 4)	1	32-47
17	—	Lock Washer - 1/4"	2	38-47
18	—	Screw - Hex Hd. - 1/4-20 x 1/2"	2	38-47
*	41303K	Mounting Plate Screw Kit (includes 2 ea. ref. 17 & 18)	1	38-47

REF.	PART NO.	DESCRIPTION	QTY.	YEAR
19	41296	Ammeter (Conn Tel & Elec Corp. - gray face - includes ref. 14-16)	1	38
*	41921	Ammeter (Conn Tel & Elec Corp. - black face - includes ref. 14-16)	1	39-40
*	168002	Ammeter (Hoyt Meter Corp. - black face - includes ref. 14-16) <i>NOTE: The 168002 ammeter will retro fit back to 1938 models</i>	1	41-46
*	168002L	Ammeter (US Gauge - black face - includes ref. 14-16) <i>NOTE: 168002L ammeter has an angled pointer and face. Commonly it is known as a 1947 style ammeter however this is not true as it was introduced in the later part of 1946.</i>	1	47
20	—	Flat Washer - #6	2	38-53
21	—	Lock Washer - #6	2	38-53
22	—	Screw - Round Hd. - #6-32 x 3/8"	2	38-53
23	41401	Ignition Switch (distributor ignition - gray)	1	38
*	41402	Ignition Switch (magneto ignition - gray)	1	38
*	41841	Ignition Switch (distributor ignition - chrome bezel)	1	39-40
*	41842	Ignition Switch (magneto ignition - chrome bezel)	1	39-40
*	1841002	Ignition Switch (distributor ignition)	1	41-53
*	841002	Ignition Switch (magneto ignition) <i>NOTE: 1841002 ignition switch will retro fit back to 1938 models</i>	1	41-53

*Not Illustrated